

# PIXIE

Simple. Smart. Home.



SAL National Pty Ltd

Head Office: 40 Biloela Street, Villawood, NSW, 2163

Offices: Melbourne | Perth | Adelaide | Brisbane



Connected Home.  
Simple. Smart. Secure

## Simple. Smart. Home

PIXIE is a smart home solution designed for Australian homeowners like you to experience the benefits of smart home technology without the huge expense of legacy home automation solutions.

Smart homes provide your family all the benefits of modern living, putting you in control of comfort, convenience, security, safety and energy savings.

Designed for Australian homes and wiring practices, PIXIE delivers total control of the smart home into the homeowner's hands with intuitive mobile Apps to setup, configure and control their home instantly.

Let PIXIE be your guide on your simple, smart home journey to a more sustainable, energy efficient lifestyle.



You can start small with a few rooms and expand your smart home experience when budgets allow, or go all-in day one. With PIXIE, you choose.



# Make your home smart, simply with PIXIE and PIXIE Plus

Complete control of your smart home from a choice of the PIXIE or PIXIE Plus apps on both iOS and Android devices.

The SAL PIXIE app delivers an intuitive in-home control experience, using the Bluetooth on your mobile devices to connect to your mesh of PIXIE devices installed.

The PIXIE Plus app adds advanced system capabilities, introducing voice control and remote monitoring options, with more sophisticated security setup for larger homes and families.



\*iPads and some Samsung Tablets operate in landscape mode

# Control your home with your Voice

Everyone can experience the convenience of hands free control with PIXIE.

PIXIE voice control is the ultimate in a modern smart home, without any of the technical hassles or ongoing fees.

Connecting the PIXIE Gateway is your bridge to a truly connected home.

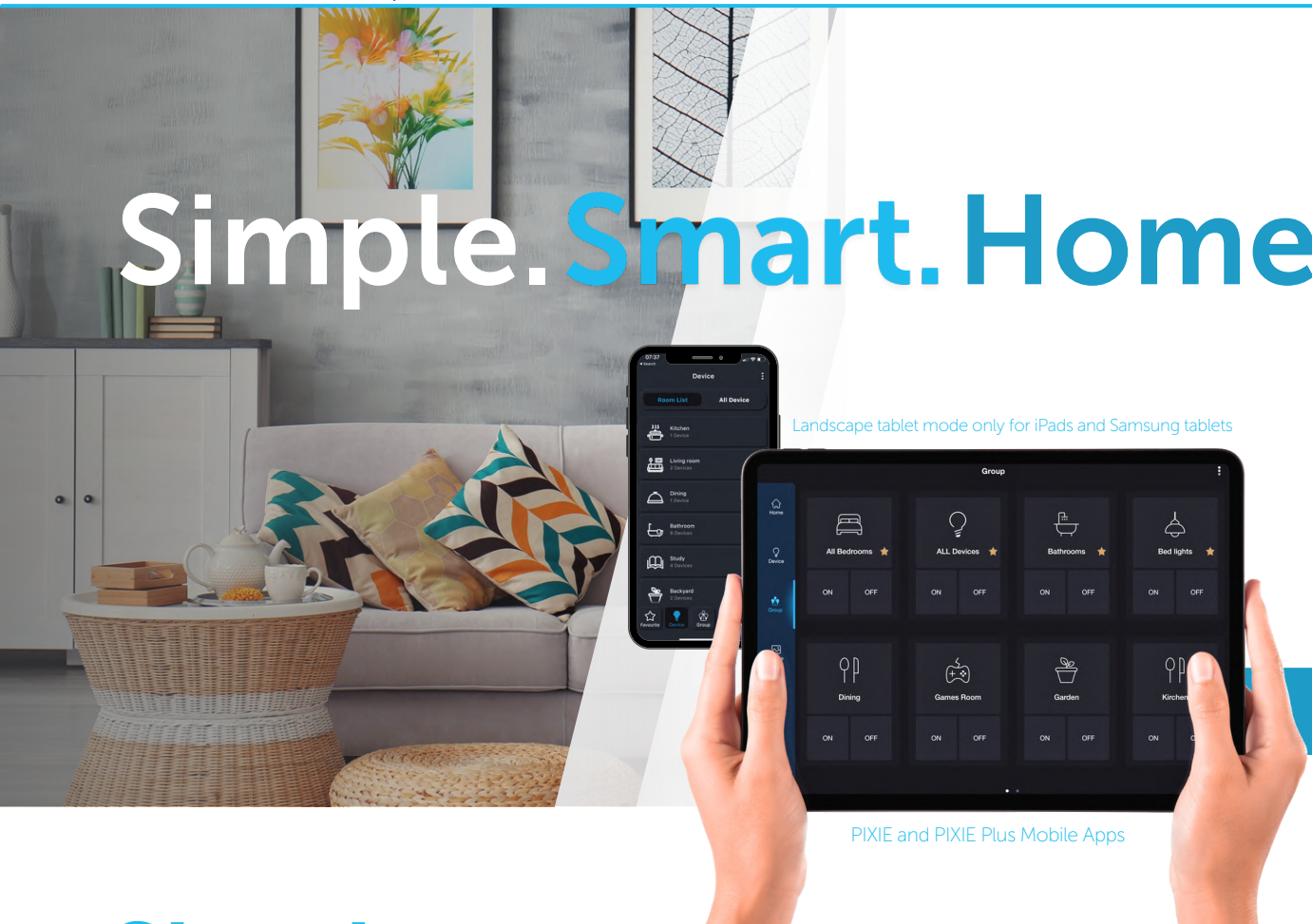


PIXIE G3 Gateway



Look for PIXIE Certified Electricians

# Simple. Smart. Home.



## Smart.

**PIXIE Smart home technology increases the IQ of your home.**

Sophisticated control capabilities built into every smart Bluetooth® Mesh module, with the simplicity of standard light switches and the convenience of mobile app control for even smarter control options.

**Smart enough to make it simple to use.**

With PIXIE, homeowners can create new schedules and scenes using the the PIXIE apps; then edit, enable and disable these whenever desired, without having to call anyone to make these changes for them.

PIXIE Gateway



## Simple.

**It's simple to install and control via PIXIE Apps.**

With no special wiring requirement and the PIXIE apps, everyone has control whilst at home, and upgrade to the PIXIE Plus app for a more intuitive user interface, security options and enhanced security and control capabilities, including out of home control.

**Wall Plates, Wall Plates, Wall Plates**

Often overlooked in smart homes system is the simplicity of a light switch on the wall, and the peace-of-mind provided to homeowners with this traditional interface.

PIXIE smart modules fit in to a wide range of popular Australian wall plates, ensuring you're always in control from the wall, with the freedom to choose wall plate designs.

**No Hub Needed**

No hub or internet connection is required to increase the IQ of your home. With PIXIE, no matter the state of your internet connection or WiFi network, your smart home keeps operating.

## Home.

**Adapt to your home. Start small and grow.**

How smart your home becomes often depends on your budget. Choosing PIXIE means you can start with one or two rooms and expand over time to include the whole home as your budget allows.

**Scale the PIXIE smart home to almost any size.**

Or you can go all-in from day one and PIXIE-FY your whole home from the day you move in and experience the benefits of a fully automated home.



## Direct control, scheduling and timing of just about everything

- ▶ Indoor and outdoor lighting with superb visual comfort dimming
- ▶ Ceiling fans, bathroom exhaust fans, heated towel rails
- ▶ Household appliances, pool pumps, irrigation systems
- ▶ Motorised blinds, curtains, awnings and windows
- ▶ Garage doors, automatic gates & door strikes for keyless entry
- ▶ Integration with a range of best of breed in-home technologies including climate control and security access\*\*

We help new home builders and renovators take control of energy costs and future-proof their homes without changing the wiring, to transform their houses to smart homes simply and cost effectively

# PIXIE. FITS. IN.

## Adaptable smart modules fit into a wide range of Australian wall plates

We know that home-owners preferred design aesthetics are as diverse as the way they live. That's why PIXIE Fits In to a wide range of wall plate styles available in Australia today.

Rather than limiting home owners to a few rigid styles and designs, or a specific number of dimmers and switches per plate, PIXIE delivers ultimate choice with a simple Click. Clack. Snap. modular approach.

Mix and match dimmers, switches, timers and scene controllers from 1-gang to 6-gang layouts with the look and feel ideal for you and your home.

### The Simplicity of Click. Clack. Snap.

Click the Ambience button-caps onto PIXIE smart modules.  
Clack the PIXIE smart modules into the Ambience Wallplate.  
Snap on the Ambience Faceplate to match decor and design

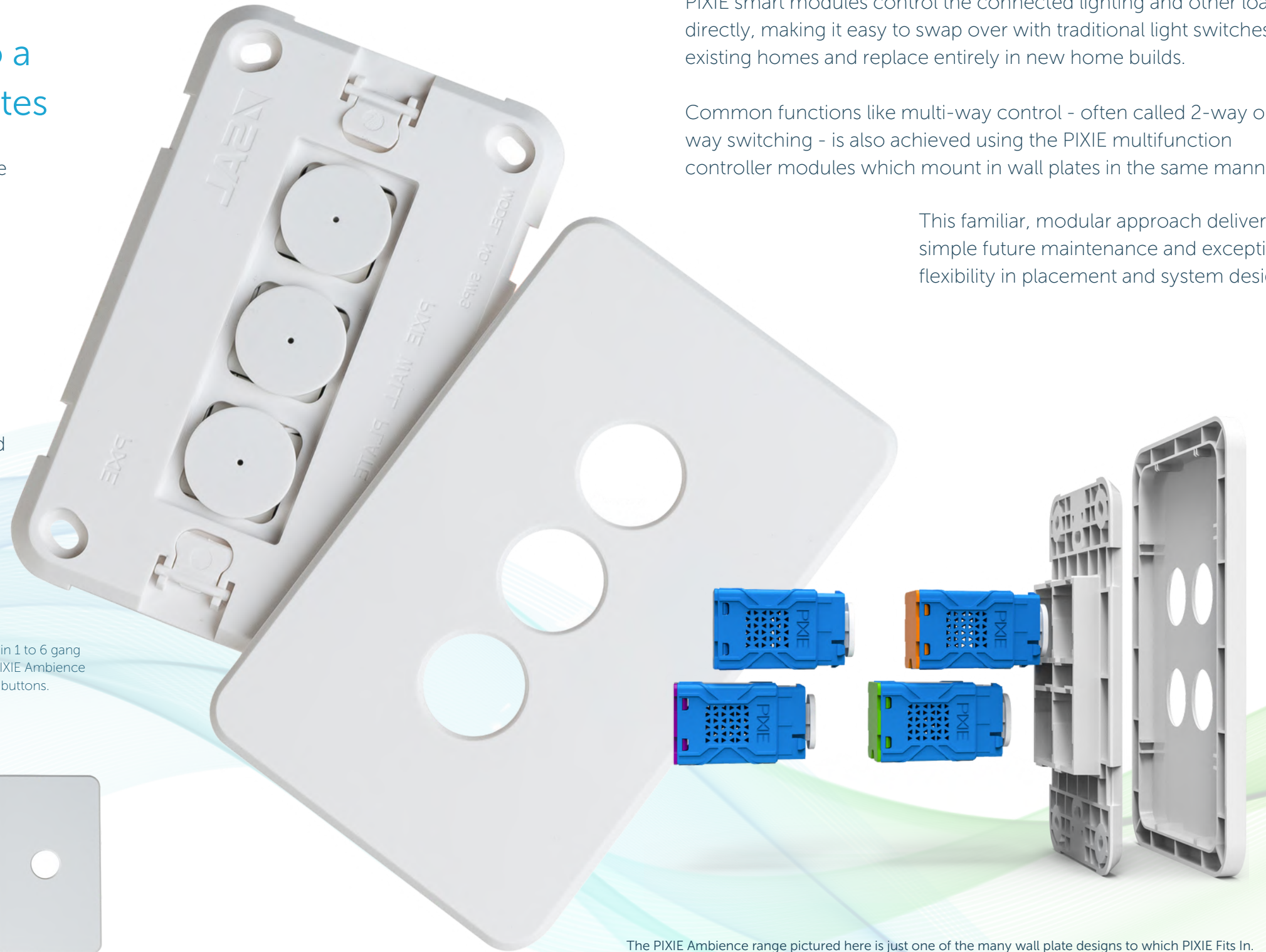
PIXIE Ambience Wallplates come in 1 to 6 gang configurations and accept both PIXIE Ambience and Ambience XL Faceplates and buttons.

## Control Everything from Anywhere

PIXIE smart modules control the connected lighting and other loads directly, making it easy to swap over with traditional light switches in existing homes and replace entirely in new home builds.

Common functions like multi-way control - often called 2-way or 3-way switching - is also achieved using the PIXIE multifunction controller modules which mount in wall plates in the same manner.

This familiar, modular approach delivers simple future maintenance and exceptional flexibility in placement and system design.



The PIXIE Ambience range pictured here is just one of the many wall plate designs to which PIXIE Fits In.

# CLICK. CLACK. SNAP.

# PIXIE Ambience Touch Panel

The PIXIE Ambience Touch Panel provides homeowners a central control hub for their PIXIE Smart Home system.

The Ambience Touch Panel makes it easy for everyone at home to control all PIXIE connected devices such as lighting blinds, fans, appliances and more.

Installation of multiple Touch Panels in the home and the ability to quickly customise each depending on the installation location, makes controlling and managing your PIXIE Smart Home even easier, no matter where in the home you are.



# PIXIE Ambience & Ambience XL Faceplate Range

PIXIE Ambience is a modern slimline wall plate range with an understated beauty, colours to match any decor and the simplicity of PIXIE's Click-Clack-Snap approach to future proofing.

The PIXIE smart modules fit perfectly into the PIXIE Ambience wall plates for direct mounting and control, right on the wall. Available in various colours with a choice of 2 faceplates styles which affix to the same wall plate base - Ambience and Ambience XL - choosing the ideal look and feel for every room in the home is simple.

PIXIE also fits in to a wide range of common Australian plates.



# Smart Ceiling Fan Control with PIXIE

PLUG-IN module by Hunter Pacific International

Hunter Pacific International provides a plug-in PIXIE module for a wide range of their indoor and outdoor DC powered, V2 ceiling fans.

Once installed home owners have complete smart control of ceiling fan speed, direction and light ( if included ) from the PIXIE mobile app, PIXIE Touch Panel (pictured here) and PIXIE wall control options.

The plug-in module delivers access to all PIXIE smart home functions including scheduling, group control of all fan control capabilities, scene creation and voice control\*



6 & 9 Speed fan control with intuitive dial interface and animated fan graphic for simple user feedback.

Select between cool white, warm white and daylight on light enabled models and adjust light intensity.

Operate comfort timers minimising energy usage automatically



PIXIE TOUCH PANEL PART#:STP54BTAS



PART#: SMFR/BTAS

## On Wall Control, Anywhere

Using the PIXIE Multifunction Rotary Controller, home owners can also control ceiling fan speed and light functions from a single, familiar rotary dial interface.

By installing one or more rotary controllers, homeowners can control their fans from multiple locations throughout their home.

## More Control Options

Users control their fan's functions individually, and as groups including scheduling functions to maximise comfort.

Mobile App control from smart phones and tablets includes quick access widget control and voice control capability when enabled in the PIXIE PLUS App.

Simply fit the Hunter Pacific International smart module (part#: PIXIEMO98) into the ceiling fan receiver base to unlock the benefits of smart control for your compatible Hunter Pacific DC V2 ceiling fans.





## Simply Swap for Smarts

Installing PIXIE smart double power points puts the smart convenience of Bluetooth® mesh into everything you plug-in, increasing the IQ of your PIXIE smart home.

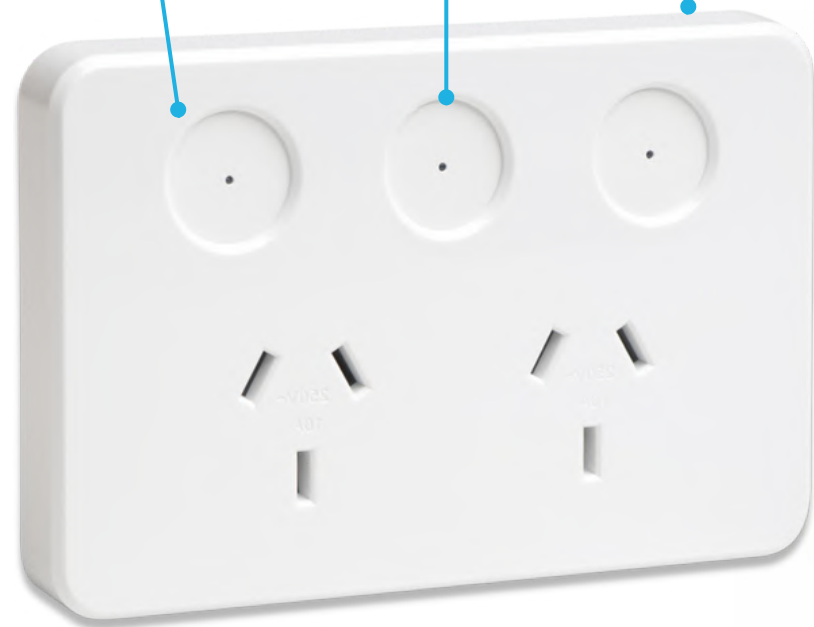
With a range of four interchangeable stylish faceplates and tactile on/off buttons with LED indicators and, the super-special multipurpose button in the middle, the humble power point just got a lot smarter.

### The MIGHTY Middle Multipurpose Button.

The middle button puts control of every PIXIE controlled device, group and scene right where you are. And if you change your mind, simply change what's under control to suit your needs using the PIXIE Apps.

Safety & Power front of mind. Lock-out manual operation with child-lock functionality and keep track of power consumption for each socket.

Individual control and scheduling. Each socket can be controlled separately, manually and from the PIXIE apps with 24hr 7 day scheduling built-in to each too.



## Ambience Faceplate Colour Options

Optional coloured faceplates in matt-black and matt-charcoal accompany the standard gloss-white, matching the PIXIE Ambience face plate aesthetic. Additionally differently styled white-gloss-only faceplates can be used to create design consistency when looking to match power points and wall plates from common selections in the market.



### Optional faceplates Gloss white only





Hey Alexa, We're Home!

Hey Google, We're Home!

Hey Siri, We're Home!

 **WATCH**

Everyone in your family can control your home simply with their voice. With PIXIE's wide choice of voice assistants, you choose which suits your family best.



# PIXIE Ripple Shield™ Dimmer

Bluetooth™

PIXIE MASTER



## Flicker Free Dimming

SFI Dimmer  
#SDD400SFI



Eliminate annoying LED down light flickering simply. Combining the PIXIE RippleShield dimmer with a range of RippleShield enabled down lights is all that's needed. This combination is immune to off-peak ripple tone injection found in NSW and Queensland and delivers an exceptional dimming experience, simply. RippleShield also works great for OFF-GRID homes and SOLAR powered homes.

- Familiar push button dimmer control with no flickering
- Smooth flicker free dimming to 1%
- Superb visual comfort with soft start / stop as standard
- Compact form factor allows for up to 6 Gang dimming wall plates
- Fits most branded switch plates and PIXIE Ambience plates
- Smart functions and configuration via PIXIE or PIXIE Plus app

[More Information](#)



### How Does RippleShield Work?

#### SIMPLE, EFFECTIVE, FLICKER FREE

- ▶ The SDD400SFI dimmer is simple for your electrician to install just like a standard 2 wire dimmer. Likewise installation of the RippleShield enabled downlights with their flex and plug provided, is a plug-and-play installation when plug bases are already installed in the home.

#### NOT JUST SMARTER

- ▶ All the smart home intelligence of PIXIE is included in each RippleShield dimmer and using combinations of SFI and non-SFI dimmers is possible.

If homeowners don't want any PIXIE smarts, the flickering is still eliminated and the RippleShield dimmer is used as a simple push-button wall dimmer.

## Say Farwell to Flickering Forever

Eliminating LED downlight flickering comes with a choice of designs and colours to meet the needs of every home. Choose from flicker immune, recessed, low glare downlights in different sizes or a more traditional LED downlight form factor with flat disc styling and tri-colour light selection.

# SAL FLICKER IMMUNITY



## Recessed, low glare downlights with RippleShield Technology

### Fixed Position

60° beam | 76mm cutout



- ▶ 3K - 9W @ 700 lumens
- ▶ 76mm cut-out
- ▶ CRI >80 | CRI >90 available

PART #:  
S9008WW/BK/SFI  
S9008WW/WH/SFI

### Centre Tilt

60° beam | 76mm cutout



- ▶ 3K - 9W @ 700 lumens
- ▶ 76mm cut-out
- ▶ CRI >80 | CRI >90 available

PART #:  
S9009WW/BK/SFI  
S9009WW/WH/SFI

### Fixed Position

60° beam | 92mm cutout



- ▶ 3K - 9W @ 700 lumens
- ▶ 92mm cut-out
- ▶ CRI >80 | CRI >90 available

PART #:  
S9011WW/BK/SFI  
S9011WW/WH/SFI



### Fixed Position

90° beam | 92mm cutout

- ▶ Tri Colour selectable, 10W
- ▶ 92mm cut-out (103mm diameter)
- ▶ CRI >80
- ▶ Lumens: 850/1000/900
- ▶ Colour Temp: 3000/4200/5700

PART #:  
ECOGEM S9041TC SFI

Downlights must be paired with PIXIE SFI Dimmer for correct operation

# PIXIE COOLUM PLUS™

Bluetooth™



Flicker Free Dimming

Downlight  
#S9068TW35WH/RS



For use with the PIXIE SDD400SFI dimmer the PIXIE COOLUM PLUS downlight delivers a flicker free experience with >CRI90 colour rendering and colour tuning from 3K to 6.5K. Using the advanced HCL mode (Human Centric Lighting) mode users experience the right light at the right place at the right time automatically whenever the lights are activated.

- Colour tunable via PIXIE Apps from 3000k to 6500k
- Colour temperatures can be scheduled and automated with HCL mode too
- Smooth flicker free dimming to 1%
- >CRI90 with superb visual comfort with soft start / stop as standard
- 92mm cut out; IP44; 9w - Deep recessed, low glare downlights

More Information



PIXIE MASTER

Needs the #SDD400SFI to operate

**SIMPLE, EFFECTIVE, FLICKER FREE**

The SDD400SFI dimmer is simple for your electrician to install just like a standard 2 wire dimmer. Likewise installation of the RippleShield enabled downlights with their flex and plug provided, is a plug-and-play installation when plug bases are already installed in the home.

**NOT JUST SMARTER**

All the smart home intelligence of PIXIE is included in each RippleShield dimmer and using combinations of SFI and non-SFI dimmers is possible.

If homeowners don't want any PIXIE smarts, the flickering is still eliminated and the RippleShield dimmer is used as a simple push-button wall dimmer.

## Human Centric Lighting

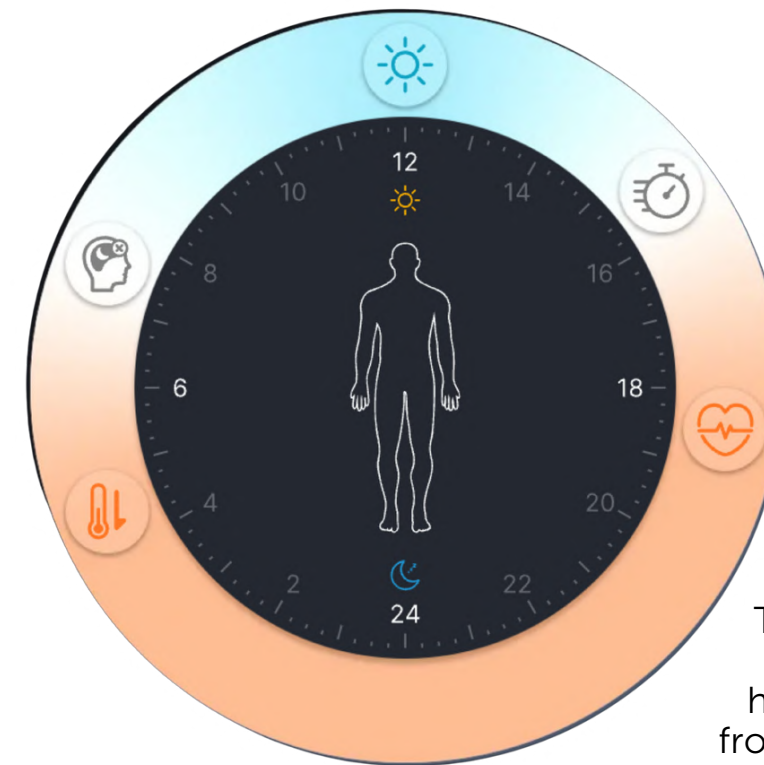
Human Centric Lighting (HCL) is a lighting concept that focuses on how light can affect people in indoor spaces

It goes beyond just helping us see better and takes into account how light can influence our emotions and our body's internal clock. HCL aims to mimic the natural changes in daylight throughout the day. This means adjusting not only the brightness of the light but also its colour.

Using the PIXIE COOLUM PLUS downlight range with PIXIE HCL mode, PIXIE now delivers a biologically tuned smart home lighting experience automatically - for an even smarter, more comfortable, healthier home.

## Right Light, Right Place, Right Time

In the morning, the lighting transitions from a warmer orange colour, introducing more blue, mimicking natural outdoor lighting. As the day goes on, more blue light is introduced peaking at midday.



Heading toward the evening, light colour becomes warmer once again, like a sunset, and then, after sunset, your lighting has only a little blue light remaining with less intensity.

These changes in light can impact our body's internal clock and the sleep hormone melatonin, which is released from a gland in our brain when our eyes detect these light changes..

## PIXIE Smart Dimmer G3



PIXIE MASTER



**PIXIE Smart Dimmer G3**  
#SDD300/BTAM

Fits into most Australian wall plates the PIXIE digital push button smart dimmer module for on + off + dimming control of dimmable light sources, with wireless Bluetooth Mesh Technology. Comes with 24hour/7 Day scheduling, Groups, Scenes, adjustable fade rates and mobile app control & configuration.

- Works with most dimmable LED downlights (trailing edge)
- Compact form factor allows for up to 6 Gang dimming wall plates
- Superb visual comfort with adjustable fade rates for scenes and schedules with soft start / stop as standard
- Fits most branded switch plates and PIXIE Ambience plates
- Smart functions and configuration via PIXIE or PIXIE Plus app

Related products



PIXIE SECONDARY

**PIXIE Multiway Switch G3**  
S2W/BTAS

- ▶ PIXIE 2-way and 3-way secondary device using existing straps for multiway switching and dimming
- ▶ Maximum 3 way operation with 2 x Multiway Switches electrically connected to the Master load controller (dimmer or switch)
- ▶ Requires at least 1 PIXIE Master device to provide function and Active + switched Active wired in parallel
- ▶ Best used where no neutral is present and straps have been installed or are already in place



**PIXIE Smart Switch G3**  
#SWL600/BTAM

Fits into most Australian wall plates the PIXIE Push button smart switch for controlling lighting and other switched loads with wireless Bluetooth Mesh Technology. Comes with 24hour/7 Day scheduling, Groups, Scenes and mobile app control and configuration.

- Compact form factor allows for up to 6 Gang switching wall plates
- Works with most non-dim lighting sources (within load capacity)
- Suitable for switching lighting and other compatible loads
- Loads greater than 600w controlled via contactor
- Fits most branded switch plates and PIXIE Ambience plates
- Smart functions and configuration via PIXIE or PIXIE Plus app

Related products

PIXIE MASTER

**PIXIE SMART TIMER SWITCH**  
STS600BTAM



- ▶ Provides timed switching control from 1 minute to 24 hours (time-outs) with auto-off after timer expires.
- ▶ Ideal for exhaust fan run-on, heated towel rails, walk in robes, stairways, security lighting
- ▶ Also comes with 24 hours 7 day scheduling and configuration & control from the PIXIE Apps.
- ▶ Loads greater than 600w controlled via contactor

## PIXIE Smart Switch G3



PIXIE MASTER

# PIXIE Multifunction Controller G3



PIXIE Multifunction Controller #SMF/BTAS

Fits into most Australian wall plates and controls any PIXIE device, groups or scenes from anywhere in the home when installed. Multifunction secondary devices which can be paired to operate with any Master PIXIE devices in either MIMC mode or SCENE mode. Comes with Bluetooth Mesh Technology.

# PIXIE Multifunction Rotary Controller

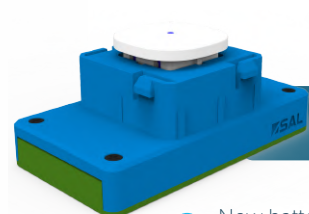


PIXIE Multifunction Rotary #SMFR/BTAS

Ideal for both AC and DC ceiling fan speed control when additional modules installed; Motorised blinds, curtains and awnings; and delivering an intuitive rotary dial interface for controlling SONOS Audio systems (when integrated) and pairing with PIXIE dimmers for fine tuned dimming control.

- Ideal for up to 9-way control of devices and groups
- Mimic Mode - mimic the control of any PIXIE master device/ group
- Scene Mode - single click and double click scene recall
- Requires Active + Neutral only from any circuit
- Fits most branded switch plates and PIXIE Ambience plates
- Smart functions and configuration via PIXIE or PIXIE Plus app

Related products



PIXIE Remote Control Button SMRM/BTAS

- ▶ New battery powered version of the Multifunction controller with MIMIC Mode and SCENE Mode control capabilities
- ▶ Designed to fit a wide range of Australia wall plates for maximum convenience
- ▶ Ideal when its challenging to get a cable down a wall and 2-way, 3 way control is needed or a Scene controller needs to be installed at the location
- ▶ Maximum 3 gang wall plate fitment possible

- DC ceiling fan controller for 9 speed fan control and light colour & intensity (for light enabled models) when using Hunter Pacific V2 DC ceiling fans and PIXIE098 module.
- Motorised blind control when paired with PIXIE Blind and Signal controller - Open , Stop, Close functionality.
- Requires at least 1 PIXIE Master device to provide function
- Pair to any PIXIE dimmer

Related products



Hunter Pacific DC V2 Fan Control PIXIE098



- ▶ Simply install this module into any Hunter Pacific International DC V2 fan to immediately PIXIEFY those ceiling fans
- ▶ 9 Speed fan control, light colour and intensity on light enabled models, timers, schedules
- ▶ **NOTE: This device is made and sold by Hunter Pacific International and works exclusively with the PIXIE smart home solution**



# PIXIE Smart Power Point



**PIXIE Smart Power Point**  
#SPO23/BTAM

A smart double power point (GPO) designed to operate as a standard 250V / 10A double wall socket and communicate with PIXIE devices via the centre mount Multifunction control. Interchangeable cover plates and caps available, child lock and power monitoring on board.

- Each outlet can be individually controlled and scheduled
- The multifunction middle button pairs with all PIXIE devices, groups and scenes anywhere in the PIXIE enabled home
- Designed with a Child-Lock function when operating with the PIXIE Plus app and activation /deactivation via front buttons
- Power monitoring per socket. Consumption visible via App

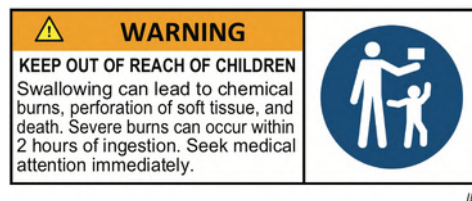
Related products



**PIXIE SECONDARY** 

**PIXIE Multifunction Remote Button**  
SMC3BTAS

- ▶ Battery powered device, designed to pair with a PIXIE master device to achieve multi-way control and can be programmed to control a group, or up to 2 scenes
- ▶ Can be installed anywhere in the house without worrying about wiring availability
- ▶ Replaceable batteries



**PIXIE Blind Controller**  
#PC206BS/R/BTAM



# PIXIE Blind and Signal Controller



Control motorised blinds, curtains, awnings; sliding gates and garage doors; integrate PIXIE with other electrical systems in the home to deliver comprehensive smart home automations, Comes with 24hour/7 Day scheduling, Groups, Scenes and mobile app control and configuration.

- Dual 6Amp relays for direct control and signal control of 4 and 3 wire blind, curtain motors respectively
- Dry contact interfacing to garage doors and motorised gates and to 3rd party equipment for on-site integration
- Highly configurable and versatile device to deliver more sophisticated home automation solutions

Related products



**PIXIE SECONDARY**

**PIXIE Translator Control**  
PC100T/R/BTAS

- ▶ Enables on-site integration between PIXIE and other in-home systems such as alarm, AV etc. with volt free input solution
- ▶ Dry contact / low level / volt free integration of PIXIE system from any system capable of providing necessary dry contact signal
- ▶ Ideal for receiving low-level inputs from sensors, alarm systems, audio visual systems, intercom systems and more
- ▶ NOTE: This device is the recommended PIXIE Bluetooth Mesh booster for larger PIXIE systems in radio-challenged environments.

## PIXIE Gate & Door Control



PIXIE MASTER



**PIXIE Gate & Door Control**  
#PC206GD-R-BTAM

The PIXIE Gate & Door Control is designed to control & monitor the status of connected motorised sliding gates, swing gates and garage doors which accept dry contact signals (such as bell press, voltage free signal, dry-contact etc) as a command input, for advanced automation scenarios.

- Monitors the open/close status via a set of contact sensors (sold separately)
- Sends status change PUSH-notifications to the user as required via PIXIE PLUS App only.
- Intuitive interface visualises garage door position for peace of mind
- Delivery mode, Pet Mode and Custom opening modes possible.

### Related products



PIXIE MASTER

**PIXIE Contact Sensor Transceiver**  
PC100CS-R-BTAM

- ▶ Monitors open & closed status of gates/doors/windows, via a set of contact sensors (sold separately)
- ▶ **Push Notifications to users are delivered (PIXIE PLUS App only) when status change occurs.**
- ▶ Any status change can be used as a trigger for logic control within the system to deliver more advanced home automation functions.
- ▶ Sensors for garage doors, automatic gates, metals windows and wooden doors available.



**PIXIE Dual Relay**  
#PC206DR/R/BTAM

Built to control larger lighting loads, pool lights and garden lights and provides two higher capacity relays for reliable contactor switching with no minimum load requirements, Comes with 24hour/7 Day scheduling, Groups, Scenes and mobile app control and configuration.

- 2 x 6Amp relays, independently controllable for larger loads
- Memory function restores the last state (on/off level) of the controlled load from a power outage
- Push Button terminals allow standard bell press-mechs to drive relays directly from the wall
- PIXIE Mesh Booster circuit included

### Related products



PIXIE SECONDARY

**PIXIE Signal Booster**  
#SGB3BTAS

PIXIE Signal Booster G3 is the 3rd generation Bluetooth Mesh signal booster, designed to expand the signal coverage of an established PIXIE network, expanding the control distances and enhancing PIXIE local wireless communication stability where signal strength is less than ideal due to building materials, architecture and product placement.

- ▶ Significantly expands signal coverage, enhancing PIXIE wireless control stability
- ▶ Sleek design, suitable for mounting in different locations.



# PIXIE DALI Broadcast Controller



**PIXIE DALI Broadcast Controller**  
#PC155DLB/R/BTAM

The PIXIE Smart DALI Broadcast Controller is designed to control DALI drivers (control gear) on the same DALI bus line via broadcast commands, meaning that all DALI devices terminated to the PIXIE DALI controller will operate synchronously, without the need to worry about DALI addressing and programming. This control is inclusive of dimming and ON/OFF control.

- DALI2 Certified Controller
- Compatible with DALI and DALI2 devices
- Built in relay for optional control methods with no minimum load
- Built in 50mA DALI power supply
- PUSH DIM function for control with any momentary press mech
- Memory function restores last state in power outage event
- Simplifies DALI system delivery.



- ▶ DALI is the Australian Standard for lighting control and offers risk mitigation, performance guarantees, and selection flexibility as most lighting suppliers provide DALI2 controllable light sources across their lighting ranges.
- ▶ **BROADCAST DALI:** This is an easy way to control DALI lighting for multiple lights. It allows for controlling a range of drivers on a single DALI line without any complicated DALI programming needed during installation and maintenance, saving time, money and reducing system complexity.
- ▶ Its now possible to deliver a DALI 'system' with none of the cost, complexity or time drain of traditional DALI systems whilst maintaining access to the comprehensive range of DALI enabled fixtures for all the different types of applications across commercial, hospitality, residential, healthcare, retail etc.



**PIXIE 0/1-10v Controller**  
#PC152V/R/BTAM

# PIXIE 0/1-10V Controller



The PIXIE 0/1-10V Controller is designed to control devices that accept 0-10V or 1-10V control signals, typically 0/1-10V dimmable LED drivers, 0/1-10V dimmable ballasts etc, allowing users to dim and operate ON/OFF the connected lighting, with the PIXIE Apps and ecosystem products

- Outputs 0-10V control signal
- In-built relay as optional control method
- PUSH DIM function allows control with a momentary switch
- Memory function restores the last state (on/off/dim level) of the lights from a power outage



Analogue 0-10v / 1-10v dimming protocol

DALI Dimmable



# PIXIE Smart Outdoor IP Rated Sensor



**PIXIE Smart Outdoor IP Sensor**  
#SMS862WF/WH/BTAM (White)

Outdoor IP66 Surface Mount PIR sensor providing energy management and lighting-as-security capabilities. This device is powered from 230V in the home and treated as a standard 3-wire sensor. Comes with 24hour/7 Day scheduling, Groups, Scenes and mobile app control and configuration.



# PIXIE Smart Indoor PIR Sensor

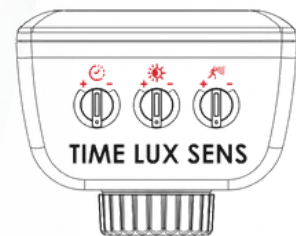


**PIXIE Smart Indoor PIR Sensor**  
#SMS861CD/BTAM

Indoor Ceiling Mount PIR sensor providing energy management and lighting-as-security capabilities. This device is powered from 230V in the home and treated as a standard 3-wire sensor. Comes with 24hour/7 Day scheduling, Groups, Scenes and mobile app control and configuration.

- Adjust sensitivity, brightness threshold and hold time to fine tune operation for applications
- Sensor parameter adjustments can be done using physical dials on the product and via the PIXIE Apps
- 4 smart operating modes: Motion | Override-On | Override-Off | Photocell Mode which can be scheduled and activated as needed
- Available in Black and White versions

- Slim low profile design
- Suitable for surface mount and flush mount applications
- Sensor parameter adjustments can be done using physical dials on the product and via the PIXIE App
- 3 smart operating modes: Motion | Override-On | Override-Off which can be scheduled and activated as needed



- ▶ 3-wire sensor that requires neutral wire
- ▶ Max Loads: 2000W (incandescent) | 500VA (LED) | 120VAC (fan motor)
- ▶ Detection Angle | Range: 110deg | 12m Max. @24°C
- ▶ Hold Time: 10 seconds to 30 minutes
- ▶ Ideal Mounting Height: 1.8 to 2.5metres
- ▶ When paired with the Multifunction Controller and Battery powered remote, automatic control of 4 operating modes is provided:

SMF/BTAS  
PIXIE Multifunction Controller



1. Single press: Switch the sensor to Motion sensor mode
2. Double press: Switch the sensor to Override-On mode
3. Triple press: Switch the sensor to Override-Off mode
4. Six presses: Switch the sensor to Photocell Mode (Sunset Switch)



- ▶ 72mm cut out
- ▶ Max Loads: 800W (incandescent) | 400VA (LED) | 100VAC (fan motor)
- ▶ Detection Angle | Range: 360deg | 8m Max. @24°C
- ▶ Hold Time: 10 seconds to 30 minutes
- ▶ Ideal Mounting Height: 2 to 2.4metres
- ▶ When paired with the Multifunction Controller and Battery powered remote, automatic control of 3 operating modes is provided:

1. Single press: Switch the sensor to Motion sensor mode
2. Double press: Switch the sensor to Override-On mode
3. Triple press: Switch the sensor to Override-Off mode



SMF/BTAS  
PIXIE Multifunction Controller

# PIXIE LED Strip Kits and Pro LED Strip Controllers



PIXIE MASTER



## PIXIE LED Strip Kits and Pro LED Strip Controllers



LED strip lighting with dot-less continuous uniform illumination, smooth, deep-dimming capabilities, highlights and accents your home's architecture and delivers functionality other lighting sources cannot accommodate. 24hour/7 Day scheduling, Groups, Scenes and mobile app control and configuration and all PIXIE smart home capability built in. Gen3 Strips kits also provides SPOTIFY beat syncing integration.

- Fully dimmable LED strip kits and controllers with PIXIE smarts
- 2 kinds of white LED Strip Kits in 2metre and 5 metre kits
- RGB in 2metre and 5metre kits
- Pro LED Strip controllers for white and RGB to control any manufacturers LED Strip
- Smooth deep dimming with no pop-off or flickering down low

### Related products



- Suitable for controlling intensity (dimming) and colour of RGB LED strips in 12v and 24v
- Memory function activated by dip switch to toggle and memorise the status if a power outage occurs



- Suitable for controlling intensity (dimming) and colour of LED strips in 12v and 24v
- Memory function activated by dip switch to toggle and memorise the status if a power outage occurs

## PIXIE Gateway #SGW3/BTAM



# PIXIE Gateway



PIXIE MASTER

This PIXIE Gateway Gen3 is a bridge to the connected PIXIE home. Connecting the internet and the PIXIE Bluetooth mesh inside the home and introducing additional features and functionality such as out of home control and voice control capabilities, with advanced security access features for family members.

- Suitable for Ethernet connection or 2.4GHz Wifi connection
- Must use the free PIXIE Plus app when installing PIXIE Gateway
- Out of home control capabilities and voice control integration for the PIXIE smart home
- PIXIE Connected Home Cloud for backup of PIXIE Home configuration
- PROGRAMode advanced logic for sophisticated scenarios

### PIXIE Works with



# A PIXIE Smarthome is easy as 1,2,3

**1** Select PIXIE as your smart home solution



**2** Download the PIXIE App



**3** Relax and experience your enhanced lifestyle



## PIXIE

### Product Portfolio 2024

PIXIE MASTER
PIXIE DIMMERS & SWITCHES

PIXIE MASTER
PIXIE BELL PRESS VERSIONS

PIXIE MASTER
PIXIE CONTROL DEVICES

PIXIE MASTER
PIXIE SECONDARY

PIXIE MASTER
PIXIE SENSORS

PIXIE MASTER
PIXIE DEVICES

**PIXIE** Its your home made smart, simply.

Make your home smart today with **PIXIE**



Free Download



SAL National Pty Ltd  
Head Office: 40 Biloela Street, Villawood, NSW, 2163  
Offices: Melbourne | Perth | Adelaide | Brisbane

[www.pixieplus.com.au](http://www.pixieplus.com.au)

PIXIE Certified Installer Details

The Bluetooth® word mark and logos are registered trademarks owned by Bluetooth SIG, Inc. and any use of such marks by SAL National Pty Ltd is under license. Google Play and the Google Play logo are trademarks of Google Inc. Apple, the Apple logo, Apple Watch and iPhone are trademarks of Apple Inc., registered in the U.S. and other countries. App Store is a service mark of Apple Inc., registered in the U.S. and other countries.

© Copyright 2024 SAL National Pty Ltd. All rights reserved. Other trademarks and trade names are those of their respective owners.

Version 4 01.02.2023